

Introduction

These notes are for **DVMR-4 PC HDD Viewer software**. This application allows stream image stored on the HDD which was previously formatted and recorded on DVMR-4.

The **DVMR-4** formatted HDD is connected to your PC, the application will automatically detect the HDD and show the recorded stream. You can also save the current screen to a BMP file, and save the current stream to a stream file [the file extension for the stream file is "MYS"].

The application consists of two functional modules:

- **DVR HDD PC Viewer** Shows stream stored in the HDD directly.
- **MYS File Player** Plays captured stream file.

Terms in This Document

- **HDD** Hard Disk, Hard Disk Drive
- **The Application** DVR HDD PC Viewer
- **VY** **DVMR-4** Format
- **VY HDD** HDD which was previously formatted and recorded on **DVMR-4**

- **OS** Operating System
- **CPU** Central Processing Unit
- **RAM** Random Access Memory
- **GUI** Graphic User Interface

Mandatory

The application runs only with following conditions.

- **OS** OS of your PC should be Windows 2000/XP or later.
- **DirectX** Your PC should be equipped with DirectX 7.0 or later.

Recommendation

Please be aware of following recommendation so that you can use the application better.

- **Operating System (OS)** The application runs only on Windows 2000 or Later (XP, 2003).
 - **CPU** 1.0 GHz or Higher.
 - **RAM** 256 MByte or greater.
-

1. Installation

A. Hardware Installation

As stated above, the application shows stream which is stored in VY HDD. Before installing and executing the application, make sure that you connected VY HDD to the IDE cable of your PC directly, or via USB HDD adaptor

B. Software Installation

Make sure that the OS of your PC is Windows 2000 or later [XP or 2003]. Otherwise, the application will not operate properly.

The application is just one execution file. So copy it to any directory you want.

2. Execution

Just double click the execution file. The application first detects physical HDDs installed at your PC and search for VY HDD among them. This process may take up to 1 minutes.

3. DVR HDD PC Viewer

A. User Interface

The default page of the application is DVR HDD PC Viewer. The user interface is shown in Fig.1.

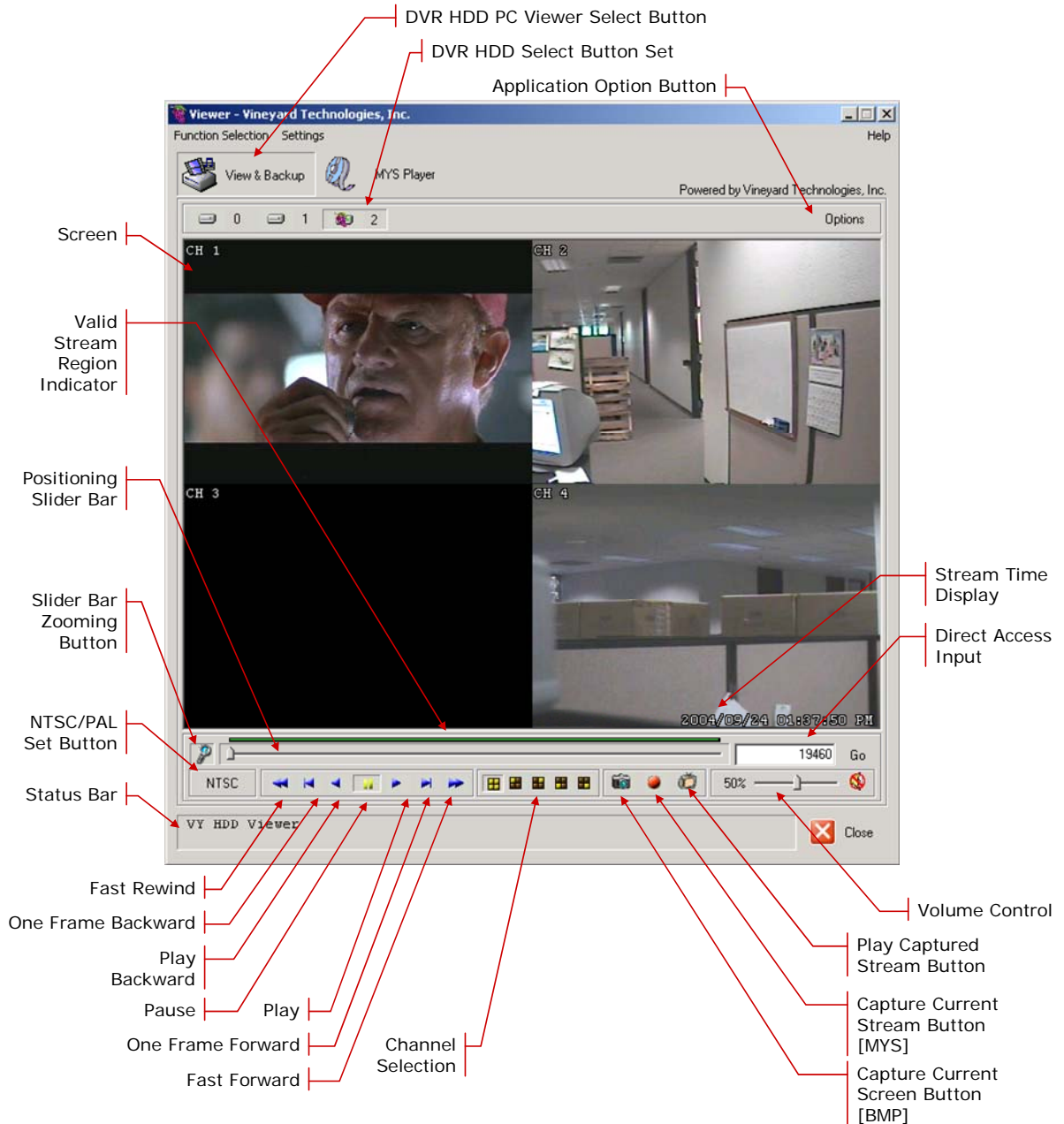



Fig.1. DVR HDD PC Viewer User Interface

B. Functions

i. HDD Selection

Once the application detects one or more VY HDDs, it automatically selects the first VY HDD. You can select any VY HDD [the VY HDDs are marked as ]. However, you cannot select the normal HDD, which may be Windows-formatted one.

ii. Valid Stream Region Indication

Once a VY HDD is selected, the application detects valid stream region where valid video stream resides. The valid stream region is marked as green within the Valid Stream Region Indicator (see Fig.1).

iii. Playback

Once a VY HDD is selected, the application automatically displays first screen recorded at the very beginning of it. Then, you can see stream at anywhere within the valid stream reason.

iv. Channel Selection

The default screen display channel setting is ALL CHANNEL, which shows all four channel (if the stream has 4 channel streams) at the same time. If you want to see a channel only or enlarge one channel, press any channel button you want.

v.

vi. Valid Stream Region Zooming

If the Valid Stream Region is relatively too small, you may have difficulty to navigate within it. In this case, you can enlarging (magnify) the Valid Stream Region by clicking Slider Bar Zooming Button (see Fig.1)

vii. Direct Access

If the stream stored in a VY HDD is quite long, you may have difficulty to find the exact scene you want to see.

When you find a scene you would like to show your friend or report to police officer later, please remember the number in the Direct Access Input edit box, so that you can go there directly by entering the number in the edit box and pressing "GO" button besides it.

viii. Screen Capturing

If you want to capture, or backup, current screen, press Capture Current Screen button. Then it will capture the current screen and saves it as BMP file.

ix. Stream Capturing

If you want to capture, or backup, current stream, press Capture Current Stream button. Then it will record the stream you want. It will create .MYS file, whose format is Vineyard Technologies' proprietary stream file format. You can play the recorded file using MYS file player.

x. Captured Stream File Playback

If you have captured an MYS file, you can replay it using MYS file player. To enable MYS player, press the Play Captured Stream Button. (See Fig.1)

xi. Configure

You can change application settings such as BMP file save directory, MYS file save directory, or default video mode (NTSC/PAL). To change setting, press Options button (See Fig.1). The Configuration Dialog will be discussed at Section 5.

4. DVR HDD PC Viewer

A. User Interface

The default page of the application is DVR HDD PC Viewer. The user interface is shown in Fig.1.

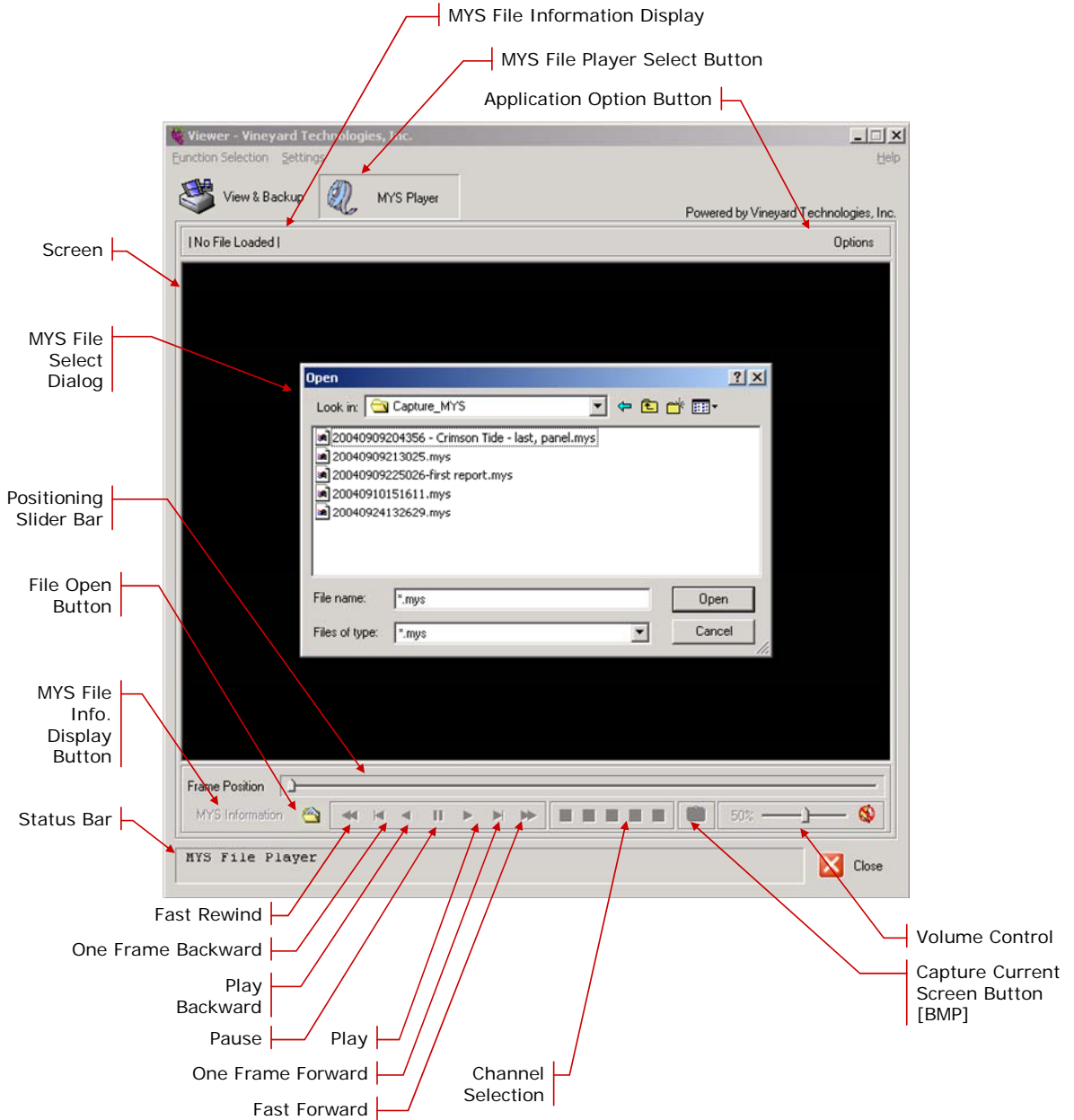


Fig.2. MYS File Player User Interface

B. Functions

i. File Open

You can open MYS file by clicking File Open Button.

ii. Valid Stream Region Indication

Once a VY HDD is selected, the application detects valid stream region where valid video stream resides. The valid stream region is marked as green within the Valid Stream Region Indicator (see Fig.1).

iii. Playback

Once a VY HDD is selected, the application automatically displays first screen recorded at the very beginning of it. Then, you can see stream at anywhere within the valid stream reason.

iv. Channel Selection

The default screen display channel setting is ALL CHANNEL, which shows all four channel (if the stream has 4 channel streams) at the same time. If you want to see a channel only or enlarge one channel, press channel button.

v. Volume Control

You can enable/disable audio sounding by clicking "MUTE" button and adjust volume by adjusting Volume slider bar.

vi. Valid Stream Region Zooming

If the Valid Stream Region is relatively too small, you may have difficulty to navigate within it. In this case, you can enlarging (magnify) the Valid Stream Region by clicking Slider Bar Zooming Button (see Fig.1)

vii. Direct Access

If the stream stored in a VY HDD is quite long, you may have difficulty to find the exact scene you want to see.

When you find a scene you would like to show your friend or report to polis officer later, please remember the number in the Direct Access Input edit box, so that you can go there directly by entering the number in the edit box and pressing “GO” button besides it.

viii. Screen Capturing

If you want to capture, or backup, current screen, press Capture Current Screen button. Then it will capture the current screen and saves it as BMP file.

ix. Stream Capturing

If you wan to capture, or backup, current stream, press Capture Current Stream button. Then it will record the stream you want. It will create .MYS file, whose format is Vineyard Technologies’ proprietary stream file format. You can play the recorded file using MYS file player.

x. Captured Stream File Playback

If you have captured an MYS file, you can replay it using MYS file player. To enable MYS player, press the Play Captured Stream Button. (See Fig.1)

xi. Configure

You can change application settings such as BMP file save directory, MYS file save directory, or default video mode (NTSC/PAL). To change setting, press Options button. (See Fig.1)

5. Application Setting

A. User Interface

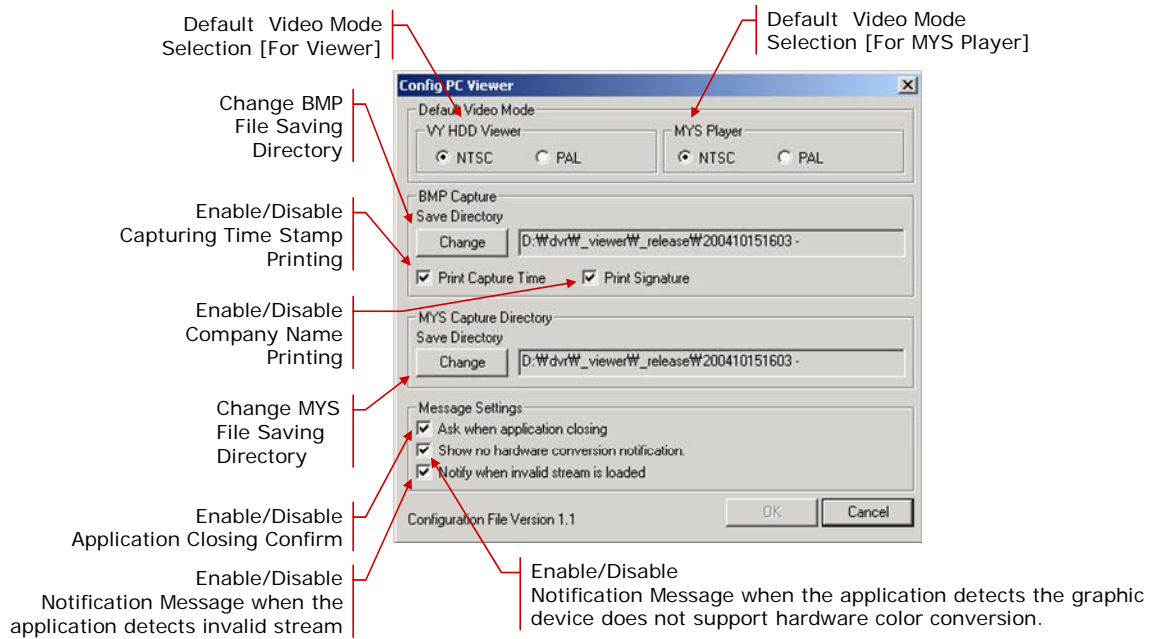


Fig.3. Application Setting Dialog

B. Functions

i. Default Video Mode Related Setting

You can specify choose the default video standard.

1. NTSC/PAL Setting for VY HDD PC Viewer
2. NTSC/PAL Setting for MYS Player

ii. BMP Capturing Related Setting

You can set the behavior of BMP capturing process.

1. Saving Directory

Press “Change” Button to change the directory where the new BMP capture file will be stored.

2. Printing Capture Information

You can enable/disable printing capturing information on the BMP file.

3. Capturing Time

4. Company Signature

iii. MYS Stream Capturing Related Setting

1. Saving Directory

Press “Change” button to change the directory where the new MYS stream file will be stored.

iv. Notification Dialog Related Setting

1. Application Closing

Enable/Disable the confirm message box for application closing.

2. No Hardware Color Conversion Support

Enable/Disable the notification message when the application detects the graphic device installed is not supporting hardware-aided YUV to RGB color conversion.

3. Invalid Stream Loading

Enable/Disable the warning message when the application [VY HDD PC Viewer] loads invalid stream data from a hard disk.
