

## Network Setup

### DVR Network Configuration

Please call your provider to identify what type of service they are providing you.  
You will need to know following ;

Upload speed – For your own knowledge for expected frame rates

Download speed – For your own knowledge for expected frame rates

Addressing – For determining what scenario you should follow

Router On Site or Just a Modem – For determining what scenario you should follow

※NOTE : If your provider is using PPPOE (usually DSL providers), you MUST have a IP Share installed on site and follow **3) Dynamic IP of PPPOE (DSL)** for DVR setup and access.

※PLEASE verify Internet access after installing any new equipment (routers, switches, modems, etc.).

### PC's TCP/IP Setting

[www.allthings.com.au](http://www.allthings.com.au)

Before configuring the DVR, please fill out the information below if applicable ;

Choose any PC on your network and determine its TCP/IP settings;

IP Address : \_\_\_\_\_(ex.192.168.1.5)

Subnet Mask : \_\_\_\_\_(ex. 255.255.255.0)

Default Gateway : \_\_\_\_\_(ex.192.168.1.1)

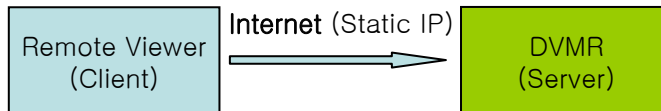
**Next pages are several network scenarios.** Please identify which scenario your current network falls within and follow the instructions for configuring and accessing your DVR via TCP/IP.

## Static IP

**User input IP address in IP CONFIG SETUP which is assigned from ISP company.**

1. Verify if IP address is OK or not with PC before connecting DVR.
2. Connect LAN cable to DVR after confirmation.
3. DVR : MENU → EXTERNAL DEVICE → TCP/IP
4. Set DHCP to MANUAL and go into TCP/IP SETUP.
5. Verify if MAC ADDRESS starts from 00-0A-A2....
6. Input IP address which is assigned from ISP company.
7. Set IP PORT. (50000 recommended)
8. Input GATEWAY which is assigned from ISP company.
9. Input SUBNET MASK which is assigned from ISP company.
10. Go out of MENU SETUP.
11. Turn off and on Modem (Router) which is provided by ISP company.  
→ This is to reset client of MAC from ISP company.  
User have to wait for 30 seconds after turning on.
12. Access DVR with Remote Viewer software.

[www.allthings.com.au](http://www.allthings.com.au)



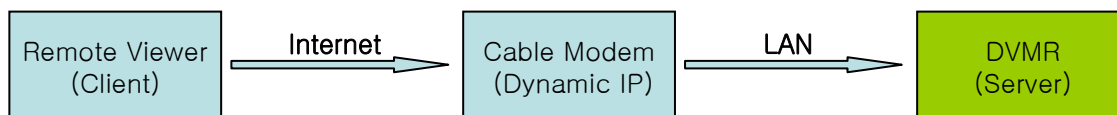
\* If user fail to access, please verify 1, 6, 7, 8, 9, 11 again.

\* When speed is too slow and connection fails after access : MENU → EXTERNAL DEVICE → TCP/IP SETUP → CONNECTION SETUP  
Increase value of Timeout to find the most suitable speed.

## Dynamic IP

1. Verify if IP address is OK or not with PC before connecting DVR.
2. Connect LAN cable to DVR after confirmation.
3. Turn off and on Modem (Router) which is provided by ISP company.  
→ This is to reset client of MAC from ISP company.  
User have to wait for 30 seconds after turning on.
4. Turn off and on DVR.
5. DVR : MENU → EXTERNAL DEVICE → TCP/IP
6. Verify if MAC ADDRESS starts from 00-0A-A2....
7. Set DHCP to AUTOMATIC and detect IP to get Dynamic IP.
8. Go out of MENU SETUP after getting IP successfully.
9. Access DVR with Remote Viewer software.

[www.allthings.com.au](http://www.allthings.com.au)



\* If user fail to access, please verify 1, 3, 4 again.

\* When speed is too slow and connection fails after access : MENU → EXTERNAL DEVICE → TCP/IP SETUP → CONNECTION SETUP  
Increase value of Timeout to find the most suitable speed.

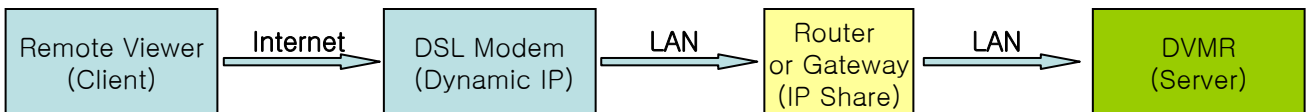
## Dynamic IP of PPPoE (DSL)

DVR doesn't support DSL (PPPoE), user have to set NETWORK with IP SHARE if user need to access DVR remotely. At this time, User have to port forward on DVR. Please contact IP SHARE Manufacturer if you need to know how to forward port.

Even though user have Static/Dynamic IP, if user want to use another device (PC) through IP SHARE, user can set NETWORK as follows,

1. Verify if IP address is OK or not with PC before connecting DVR.
2. Connect Router (IP SHARE) to DSL modem as shown the following picture.
3. Set the internet connection on Router (IP SHARE). (Refer to the Router Manual.)
4. Verify if sub-group of network in Router is OK or not.
5. Connect DVR to Router.
6. DVR : MENU → EXTERNAL DEVICE → TCP/IP
7. Set DHCP to MANUAL and go into TCP/IP SETUP.
8. Verify if MAC ADDRESS starts from 00-0A-A2....
9. Input internal IP address which user assigned from Router.
10. Set IP PORT. (50000 recommended)
11. Input GATEWAY of Router.
12. Input SUBNET MASK of Router.
13. Go out of MENU SETUP.
14. Forward port from Router. (Refer to the Router Manual.)
15. Access DVR with external IP and Port (Port forwarded).

\* If Router support DDNS, user can access Remote Viewer using Domain Information.



\* If user fail to access, please verify 1, 4, 15 again.

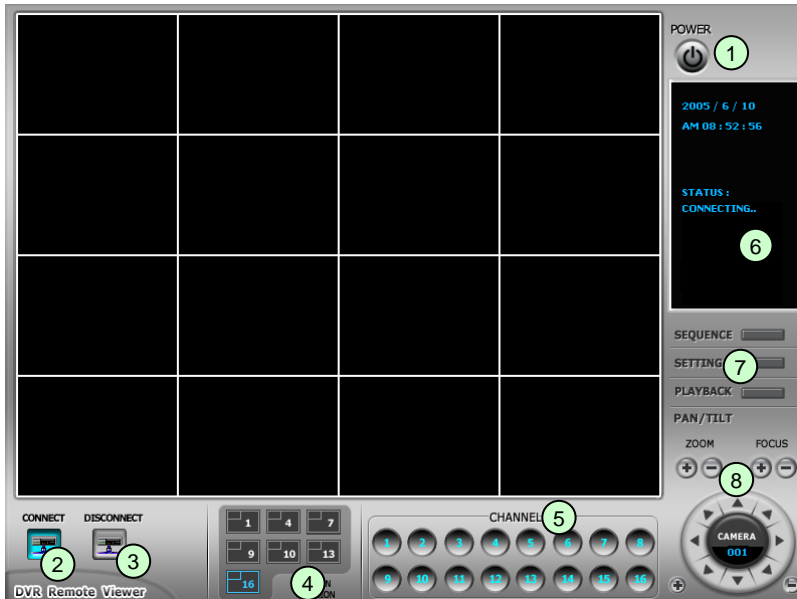
[www.allthings.com.au](http://www.allthings.com.au)

\* When speed is too slow and connection fails after access : MENU → EXTERNAL DEVICE → TCP/IP SETUP → CONNECTION SETUP  
Increase value of Timeout to find the most suitable speed.

## Remote Viewer program

### MAIN INTERFACE

www.allthings.com.au



- ①- **Power button** : Press the Power switch to exit the program. Please disconnect the live feed before powering off the software
- ②- **Connect button** : Press the Connect button to view the live images from the DVR. These are the same images being displayed on the monitor of the DVR, with a delay depending on your internet connection at both the DVR location and from where you're currently accessing.
- ③- **Disconnect button** : Press this button to disconnect from the DVR unit. Then you may power off the software.
- ④- **Screen Division button** : Select how many channels to view simultaneously (single, 4-split, 9-split, or 16-split). When you select a view you will see the Channel Numbers highlighted which determine what channels are currently being viewed.
- ⑤- **Channel number button** : Select the channel that you want to view based on what Screen Division view is enabled.
- ⑥- **Status window** : Display's the current time and date based. The date is in the format : Year/Month/Day. You will also see the status of your connection.
- ⑦- **Setting, Playback, and Sequence buttons** ; a. Setting : Enables the software configuration screen.  
b. Playback : Enables the remote playback screen.  
c. Sequence : When in single channel view, hitting the sequence button will sequence through all active channels at a speed specified in the settings menu.
- ⑧- **PTZ control** : You can control a PTZ camera via the software with these controls.
  - a. First, you must input or configure the specific PTZ protocol into the software in order to communicate with the PTZ device.
  - b. When you press any of the controls for the PTZ, please press and hold the button for 1-2 seconds per instance to compensate for the data transmission rate. If you do not and instead simply click the PTZ buttons, you may get undesired results (having the requested operation transmitted repeatedly, regardless of your intention).
  - c. The plus and minus buttons send the PTZ commands to the corresponding PTZ camera ID.

## IP/PORT Setting Screen

RemoteViewer Setup

IP/PORT | DDNS | PTZ/SAVE

NAME:        MANUAL     DDNS

ADDRESS:       PORT:

USER ID:       PASSWORD:

Name	IP	Port
INTERNET	192.168.1.160	50000

Select    Save    Delete

OK    Cancel

→ IP List

### MANUAL DDNS

Input IP address and PORT manually  
Receive IP address and PORT from DDNS Server.  
For further information of DDNS, please contact your vendor.

[www.allthings.com.au](http://www.allthings.com.au)

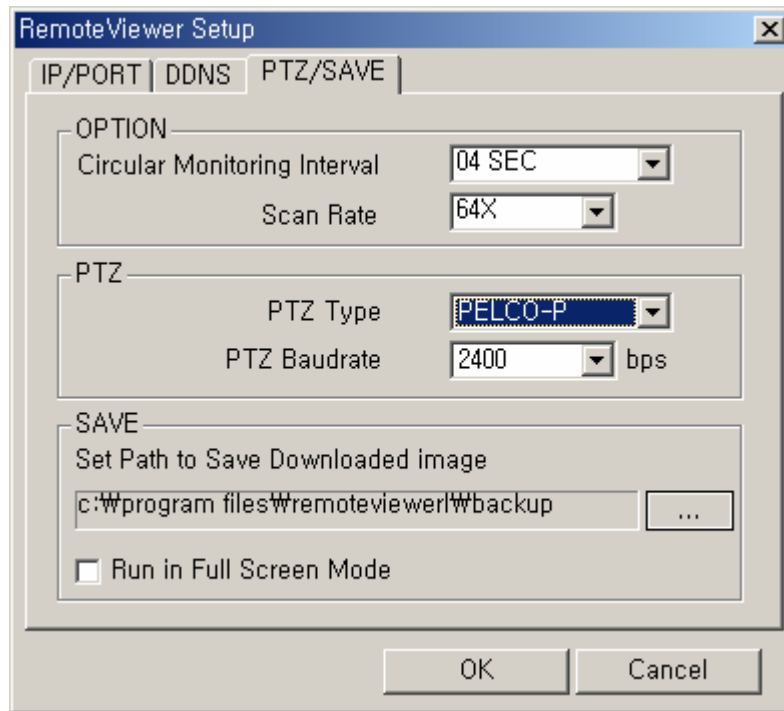
### Name Address PORT ID Password

Name of IP address on the list.  
Input IP address which is set on DVR  
Input PORT which is set on DVR  
Input ID which is set on DVR. (Please input 'admin'.)  
Input password which is set on DVR

**IP List**      It shows IP list which user input manually.

**Select Button**    Select IP and PORT on the list.  
**Save Button**      Save IP and PORT on the list.  
**Delete Button**    Delete IP and PORT on the list.

## PTZ/SAVE Setting Screen



**Circular Monitoring Interval** : This indicates the speed of the channels sequence when the SEQUENCE button is used from the main interface.

**Scan Rate** : Set speed of playback.

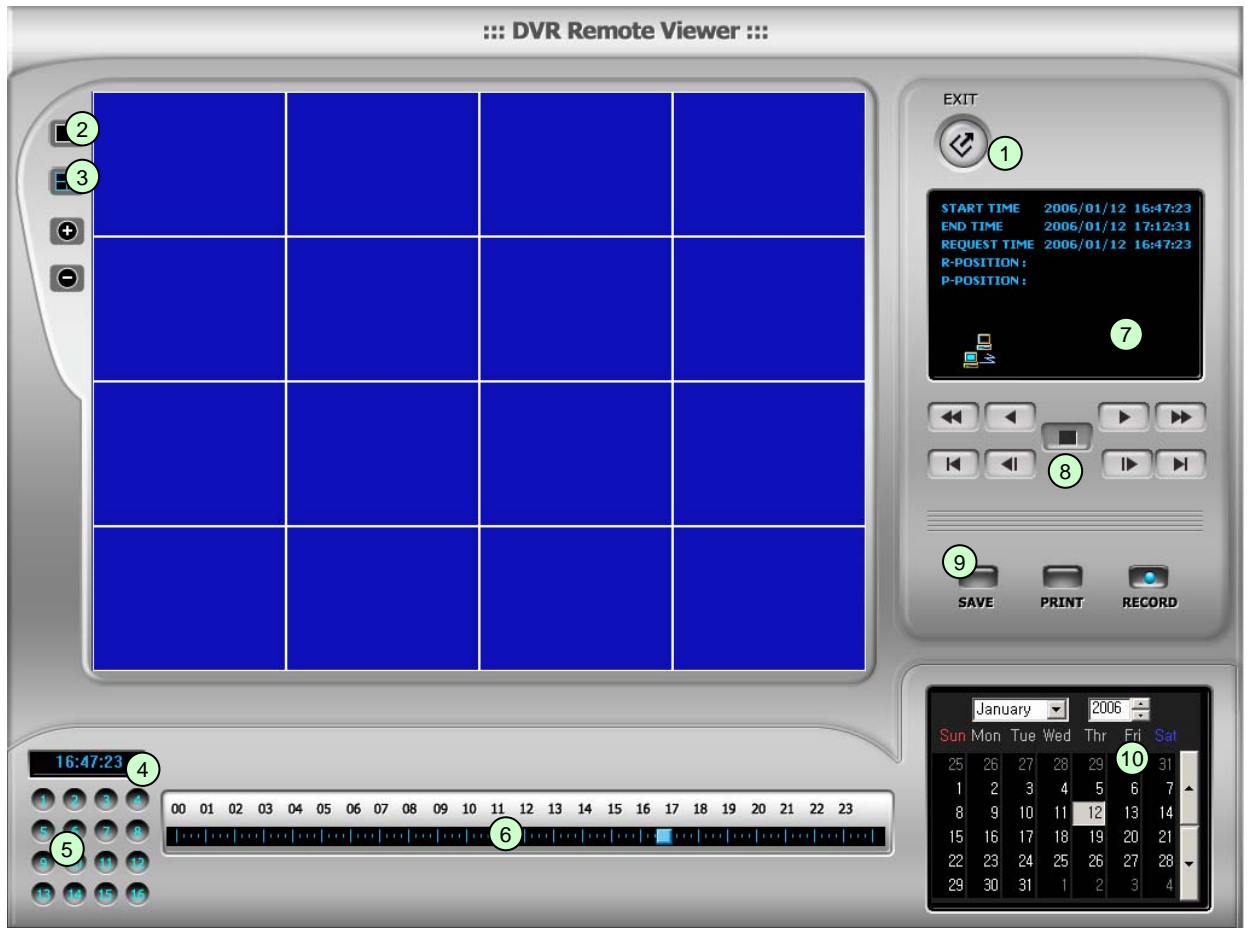
**PTZ TYPE** : Select PTZ camera which is connected to DVR.

**PTZ Baud Rate** : Enter the Baud Rate of your PTZ camera.

**Set Path to Save Downloaded image** : Determines the location and folder on your PC where the downloaded video clips are stored.

**Run in full screen mode** : When checked, this will enable the program to re-adjust the interface to completely fill your computer screen.

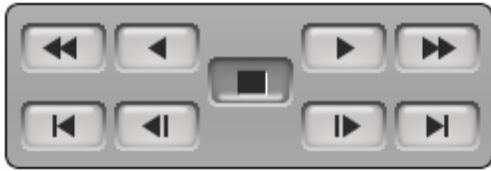
## PLAYBACK INTERFACE through Remote Viewer





Function of each button in Search window.


[www.allthings.com.au](http://www.allthings.com.au)

- ① **Exit** : Exit to live window.
- ② **Full screen** : Select a certain camera to view in full screen.
- ③ **Quad** : To view quad mode (4 channels at the same time)
- ④ **Time** : The recording time & date information of the pictures which is being played.
- ⑤ **Channel selection** : Select each camera.
- ⑥ **Time selection** : Select a time from which user want to see. The playback will be started from this point.(drag the point using mouse)
- ⑦ **Start and end time** : Indicate record starting time and end time of images on HDD
- ⑧ **Other operating button** : Refer to the next page description.





 : Play fast backward


 : Play backward(1X)


 : Play forward(1X)


 : Play fast forward

 : Stop playback

 : Move to the start of recording

 : Move to the previous hour

 : Move to the afterward hour

 : Move to the end of recording

## ⑨ Command button.

[www.allthings.com.au](http://www.allthings.com.au)

**a) SAVE** : After pressing the Stop button, click SAVE button to save the currently viewed image in jpg format.

**b) PRINT** : After pressing the Stop button, click PRINT button to print the currently viewed image.

**c) RECORD** : Press this button to download playback images transmitted from DVR unit into your PC. User can see saved images using Windows Media Player.

## ⑩ Calendar

Use this to select the date you wish to search. The filled in square outlines the date that is at the beginning of the hard drives. The outlined square indicates the data at the end of the hard drives. Select the date you wish to view. Verify a filled in square for that particular date. If an invalid date is selected it will default to the beginning of the hard drive(s).